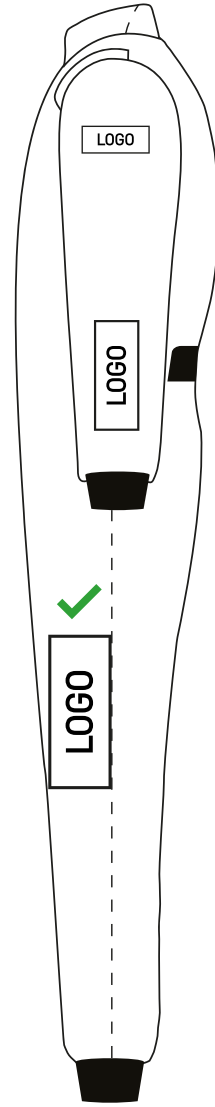
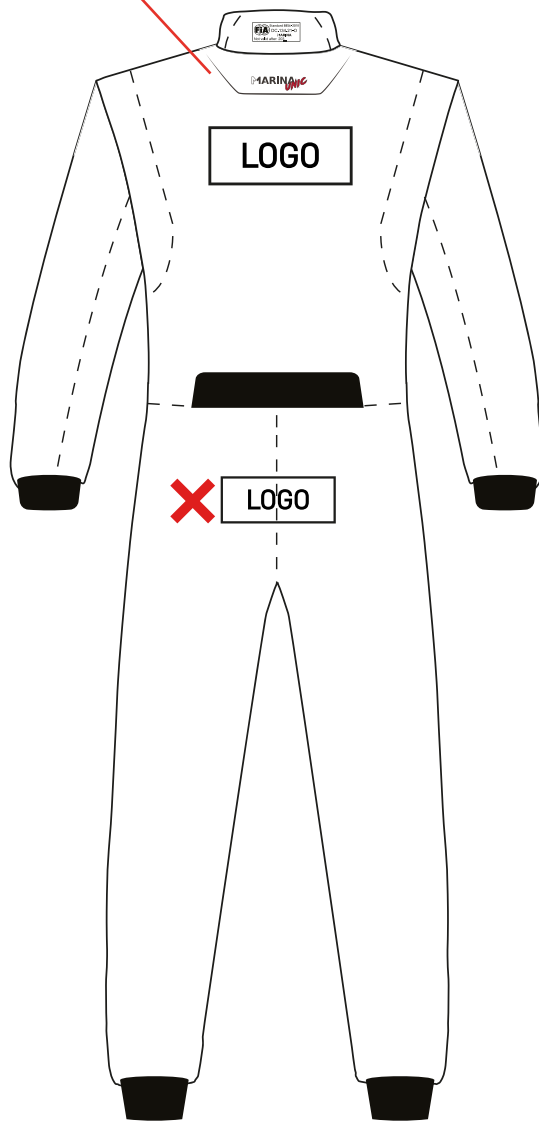
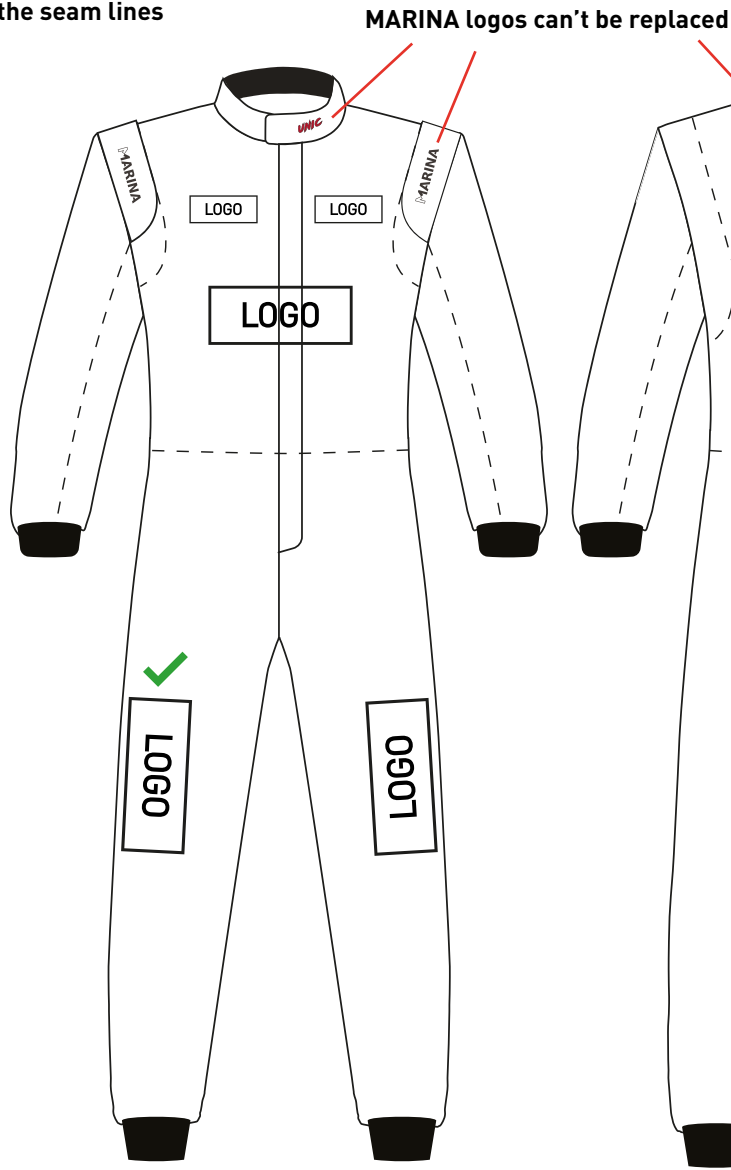
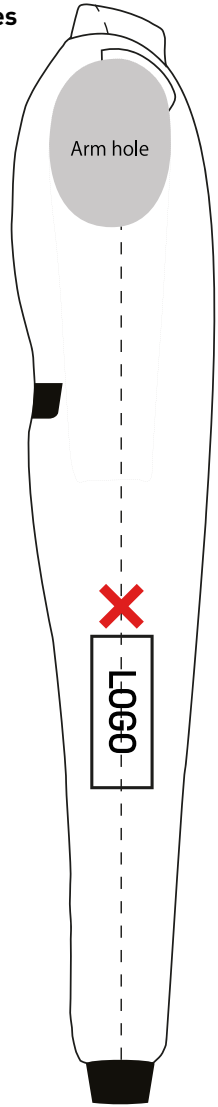


LOGO Free position of logos respecting the seam lines

..... Seam lines



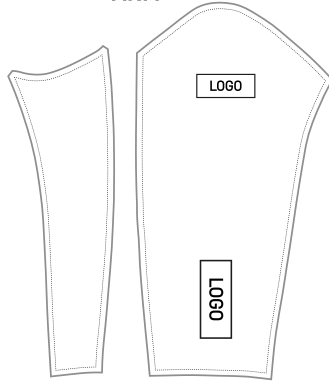
Logos or complex illustrations can't cross the lateral seam lines

LOGO

Free position of logos respecting the seam lines

..... Seam lines

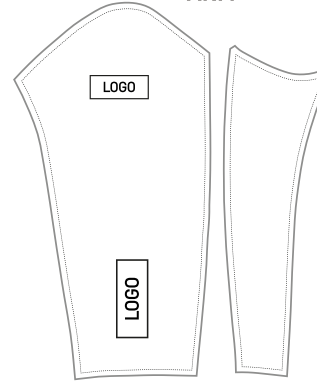
**RIGHT
ARM**



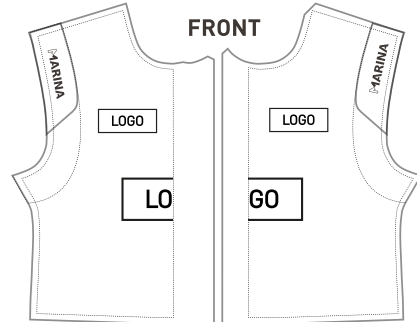
NECK



**LEFT
ARM**



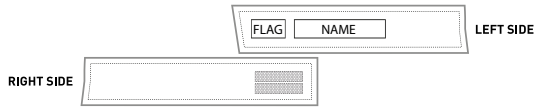
FRONT



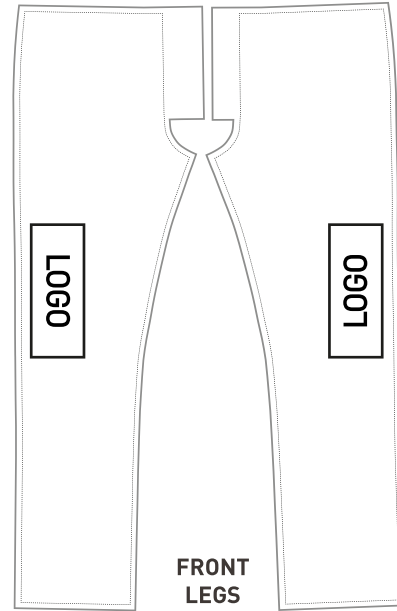
BACK



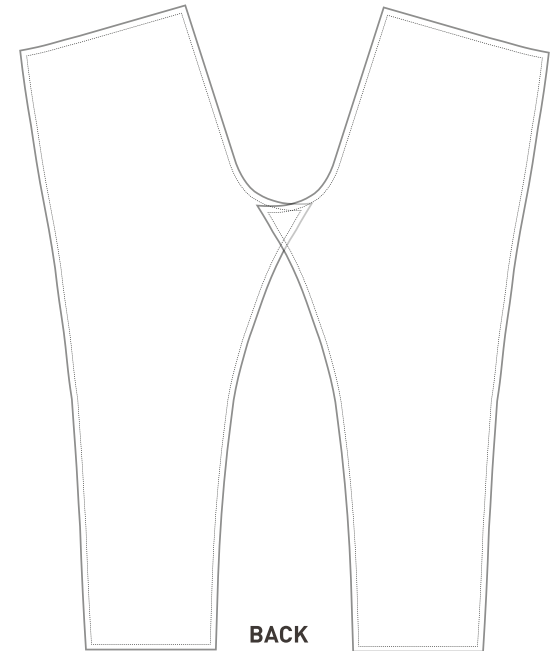
BELT



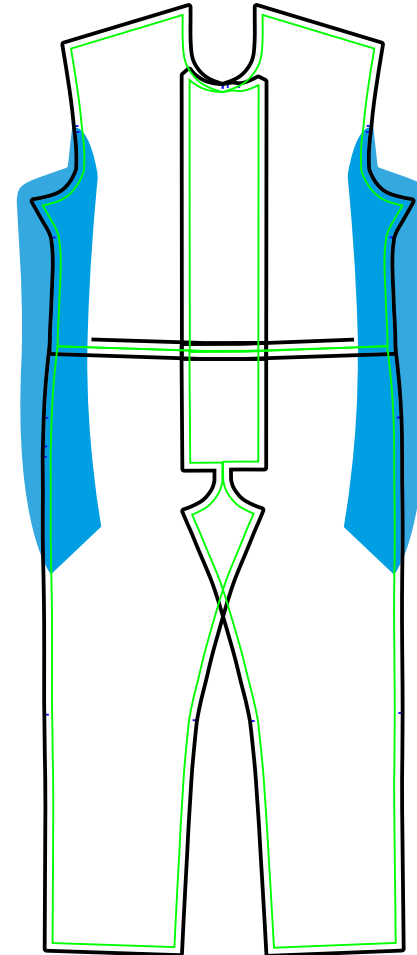
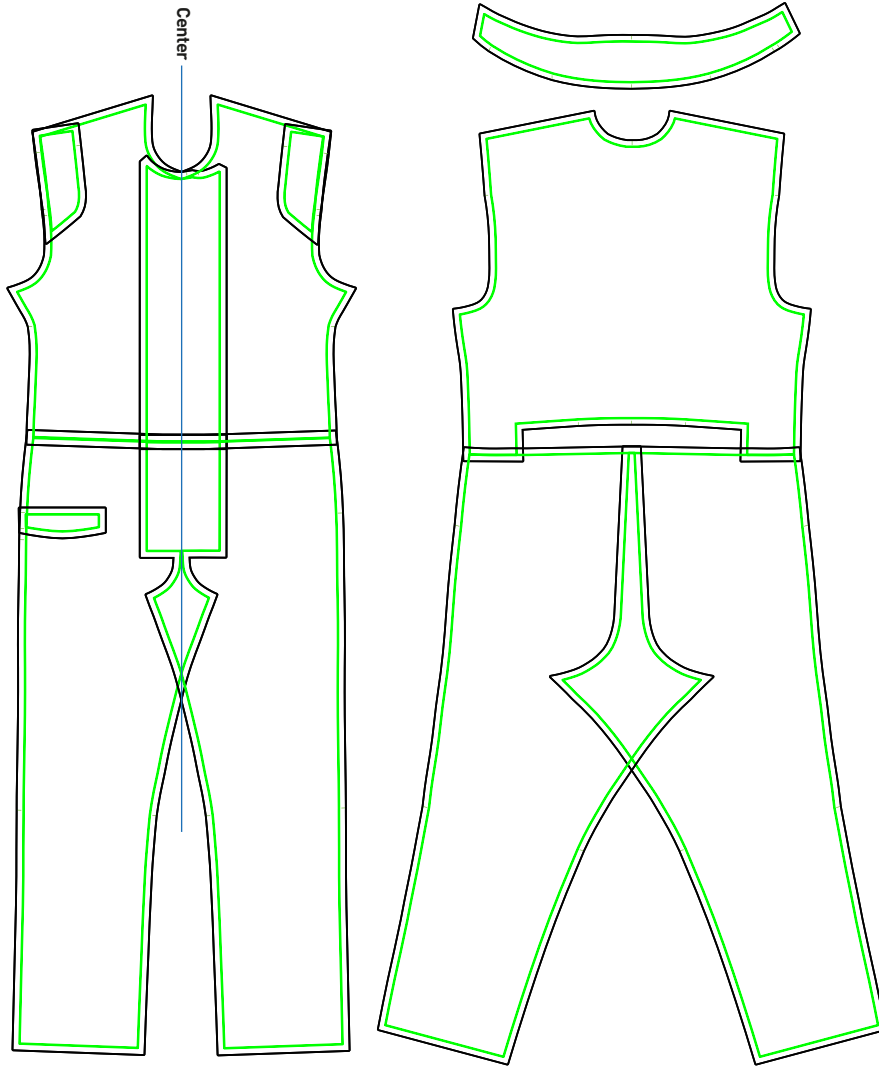
**FRONT
LEGS**



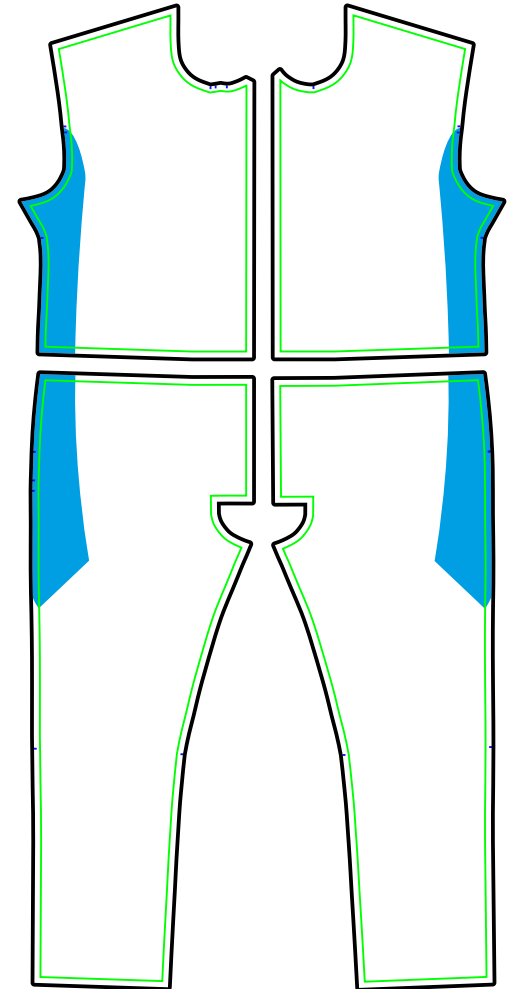
**BACK
LEGS**



DESIGN PLACEMENT OF RACESUIT PARTS



Placement of the parts to make the design



Use clipping masks to fit illustrations inside pieces

To create the design join the principal pieces like that and make the suit design above the pattern, once finished use clipping masks to put the design inside each piece as shown below.

Colors on the suit should be Marina color chart or pantone codes to ensure the desired color result.

RGB **CMYK** **PANTONE**

racestore.at ✓

racestore.at ✗

Quality of the logos and illustrations should be vectorized

CARTA DE COLOR / COLOR CHART



	PEARL GREY 10		BLUE GREEN 312 C		BRIGHT RED P55-02		PURPLE PS4-12
	METAL GREY 20		DAZZLING BLUE 300 C		RASPBERRY RED 1805 C		LIGHT ORANGE YP4-04
	BATTLESHIP GREY 55		MONACO BLUE 655 C		BURDEOS RED 188 C		LIME GREEN YS3-06
	ANTHRACITE GREY F 361 95		ARMY GREEN 5753 C		VIBRANT ORANGE YS4-01		PINK FLUOR PI 10
	TOTAL BLACK 100		BOTTLE GREEN 355 C		PINK PL1-19		RED FLUOR PS4-02
	SKY BLUE 290 C		BRIGHT GREEN YS3-09		MAGENTA PURPLE PS4-14		YELLOW FLUOR YE 10
	PALE BLUE 536 C		PINEAPPLE YELLOW YL5-02		GOLD 457 C		REFLEX BLUE Reflex Blue C